

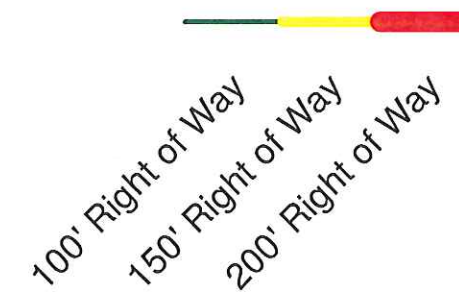
Sources: Esri, DeLorme, NAVTEQ, USGS, Intermap, IPC, NRCAN, Esri Japan, METI, Esri China (Hong Kong), Esri (Thailand), TomTom, 2012

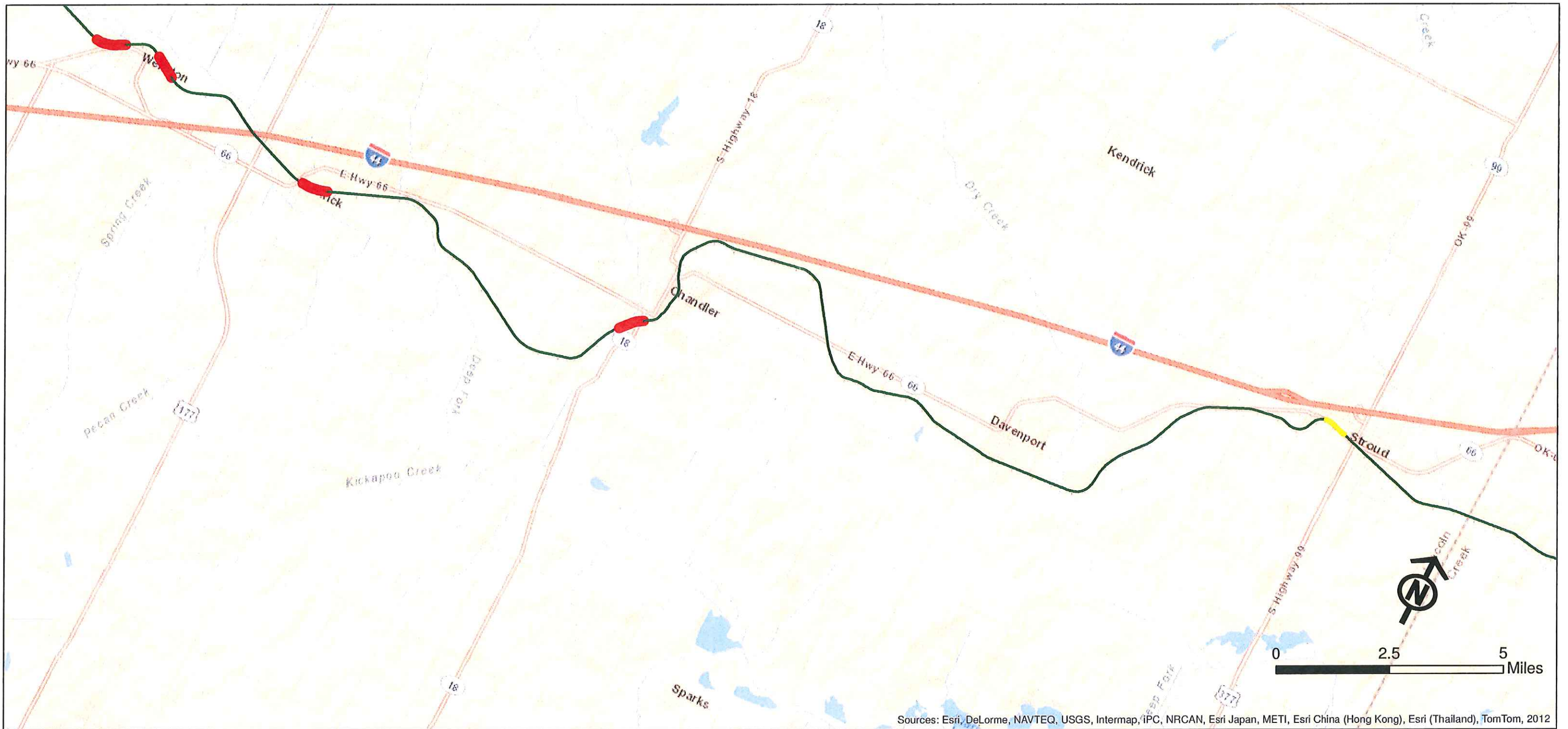


State Owned Railroad Right of Way Assessment
 Stillwater Central Railroad (Sooner Subdivision)
 Sapulpa to Oklahoma City

SLWC - OKC to Sapulpa				
R/W Bandwidth (Feet)	Length (Miles)	Length %	Acreage	Acreage %
100	91.37	95.54%	1107.52	91.64%
150	0.41	0.43%	7.45	0.62%
200	3.86	4.04%	93.58	7.74%
Totals	95.64	100.00%	1208.55	100.00%

Right of Way Bandwidth

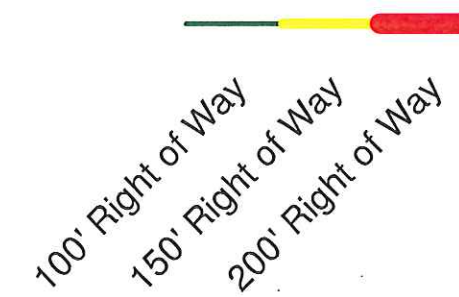


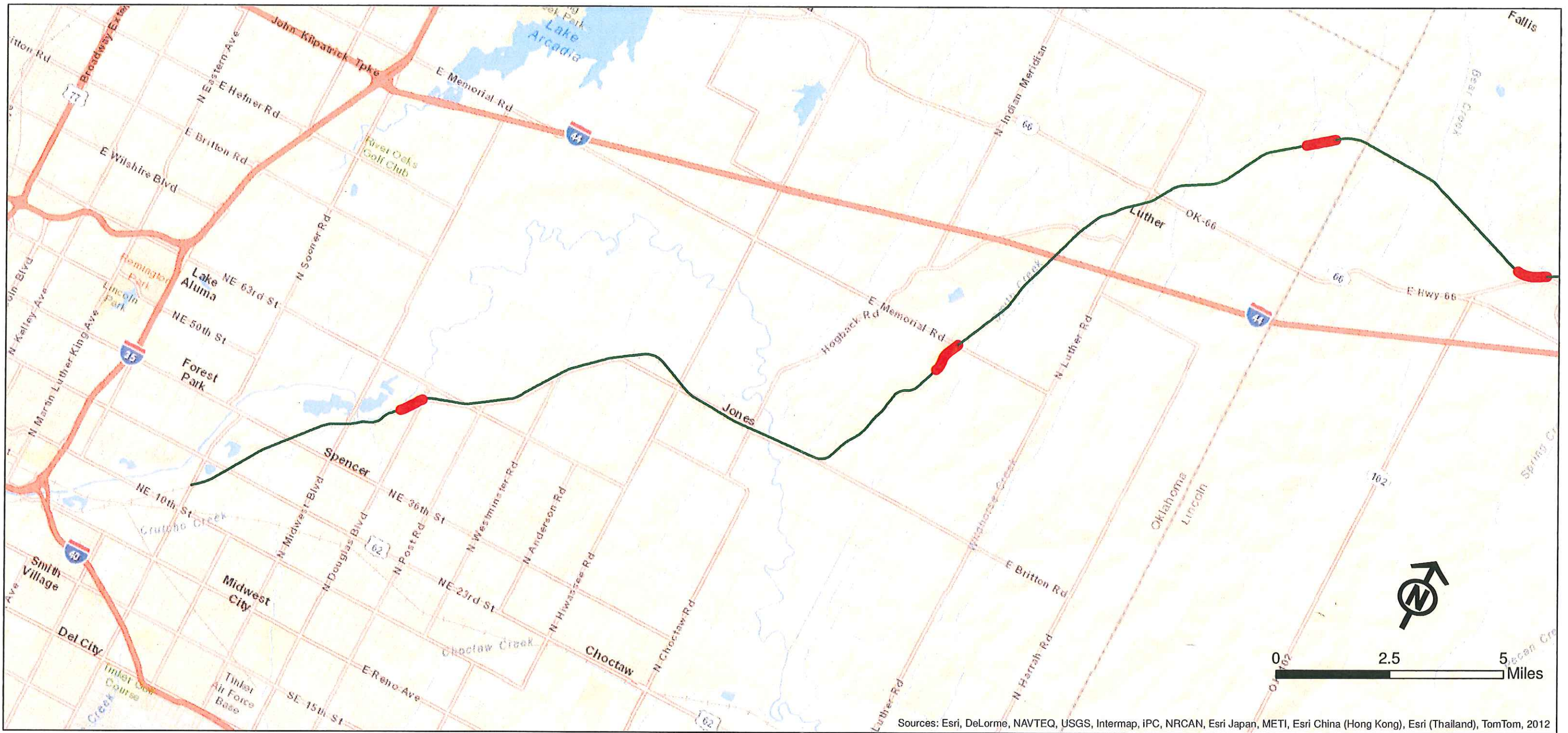


State Owned Railroad Right of Way Assessment
 Stillwater Central Railroad (Sooner Subdivision)
 Sapulpa to Oklahoma City

SLWC - OKC to Sapulpa				
R/W Bandwidth (Feet)	Length (Miles)	Length %	Acreage	Acreage %
100	91.37	95.54%	1107.52	91.64%
150	0.41	0.43%	7.45	0.62%
200	3.86	4.04%	93.58	7.74%
Totals	95.64	100.00%	1208.55	100.00%

Right of Way Bandwidth





State Owned Railroad Right of Way Assessment
 Stillwater Central Railroad (Sooner Subdivision)
 Sapulpa to Oklahoma City

SLWC - OKC to Sapulpa				
R/W Bandwidth (Feet)	Length (Miles)	Length %	Acreage	Acreage %
100	91.37	95.54%	1107.52	91.64%
150	0.41	0.43%	7.45	0.62%
200	3.86	4.04%	93.58	7.74%
Totals	95.64	100.00%	1208.55	100.00%

Right of Way Bandwidth

